

# TRANSMISSION SERVICING - A/T

1994 Mitsubishi 3000GT

1994 TRANSMISSION SERVICING  
Chrysler/Mitsubishi Automatic Transmission

Dodge; Stealth  
Mitsubishi: Diamante & 3000GT

## IDENTIFICATION

### AUTOMATIC TRANSMISSION APPLICATIONS TABLE

Model	Transmission/Transaxle
Diamante, Stealth & 3000GT	Model F4A33 Transaxle

## LUBRICATION

### SERVICE INTERVALS

Transaxle/Transmission

Check fluid level every 12 months or 15,000 miles. Change fluid and filter every 30,000 miles. If vehicle is operated under severe conditions, change fluid more often. If severe darkening of fluid and strong odor are noted, bands should also be adjusted.

Transfer Case

On 4WD and AWD models, change transfer case fluid every 30,000 miles.

### CHECKING FLUID LEVEL

Transaxle/Transmission

1) Park vehicle on level area. Ensure oil is at normal operating temperature, parking brake is engaged, and engine is at idle. Move gear selector through each position, stopping briefly at each selection.

2) Place gear selector in Neutral, and clean area around dipstick tube. Ensure fluid level is between lower and upper marks, but never over upper mark, in HOT range. Add or drain fluid if necessary.

CAUTION: If severe darkening of fluid and strong odor are noted, change fluid and filter, and adjust bands.

Transfer Case (Stealth & 3000GT)

Lubricant level should be approximately .5" (13 mm) below fill hole on side of transfer case.

Transfer Case (Diamante)

Lubricant level should be to bottom of fill hole on side of transfer case.

### RECOMMENDED FLUID

Transaxle/Transmission

Use Chrysler Plus/Mitsubishi Plus ATF, Dexron or Dexron-II ATF.

Transfer Cases  
Use SAE 75W-85 gear oil with API GL-4 rating or higher.

## FLUID CAPACITIES

TRANSAXLE/TRANSMISSION REFILL CAPACITIES TABLE

Application	Refill Qts. (L)	Dry Fill Qts. (L)
Diamante, Stealth & 3000GT .....	4.8 (4.5) .....	7.9 (7.5)

TRANSFER CASE REFILL CAPACITIES TABLE

Application	Pts. (L)
Stealth & 3000GT .....	.6 (.3)

## DRAINING & REFILLING

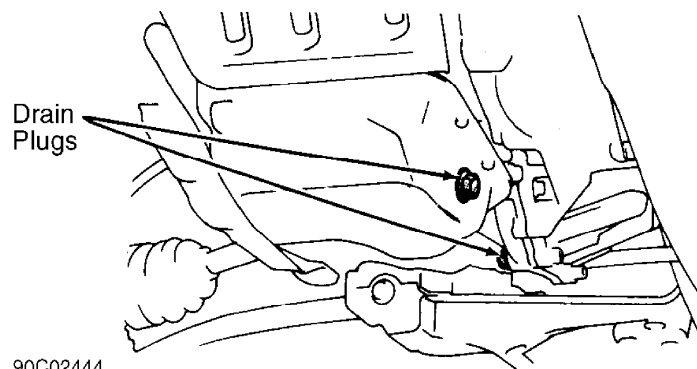
NOTE: Although manufacturer recommends changing only fluid, the oil filter/screen may also require replacement. If replacing oil filter/screen, note length and location of all bolts.

### Transaxle

1) Remove drain plug(s), and drain fluid. See Fig. 1. Some models may contain a drain plug located in housing below drive axle shaft, in oil pan. Remove oil pan. Remove oil filter/screen if necessary.

2) If oil filter/screen is replaced, tighten bolts to specification. See TORQUE SPECIFICATIONS TABLE at the end of this article. Clean oil pan, replace gasket, and install oil pan. Tighten oil pan bolts and drain plug to specification. See TORQUE SPECIFICATIONS TABLE at the end of this article. Ensure dipstick hole area is clean, and pour approximately 4.2 qts. (4.0L) of Dexron-II fluid into dipstick hole.

3) Operate engine at idle for 2 minutes. Shift transaxle to each position, ending in Neutral. Add sufficient fluid to reach lower mark. After reaching normal operating temperature, fluid should be between upper and lower marks of HOT range on dipstick.



90C02444

Fig. 1: Locating Drain Plugs  
Courtesy of Mitsubishi Motor Sales of America.

Transfer Case  
Drain plug is located on bottom of transfer case. Change

drain plug gasket whenever fluid is changed. On Stealth and 3000GT, lubricant level should be approximately .5" (13 mm) below fill hole on side of transfer case.

## ADJUSTMENTS

### KICKDOWN SERVO

1) Remove all dirt and grease around kickdown servo switch. Remove snap ring and kickdown servo switch.

2) To prevent servo piston from turning, install Adapter (MD998915) and Kickdown Servo Wrench (MD998914) so tab of wrench engages with notch of piston. See Fig. 2.

CAUTION: DO NOT push servo piston inward while installing adapter and servo wrench. Install adapter in brake pressure port by hand ONLY. DO NOT use wrench to tighten adapter.

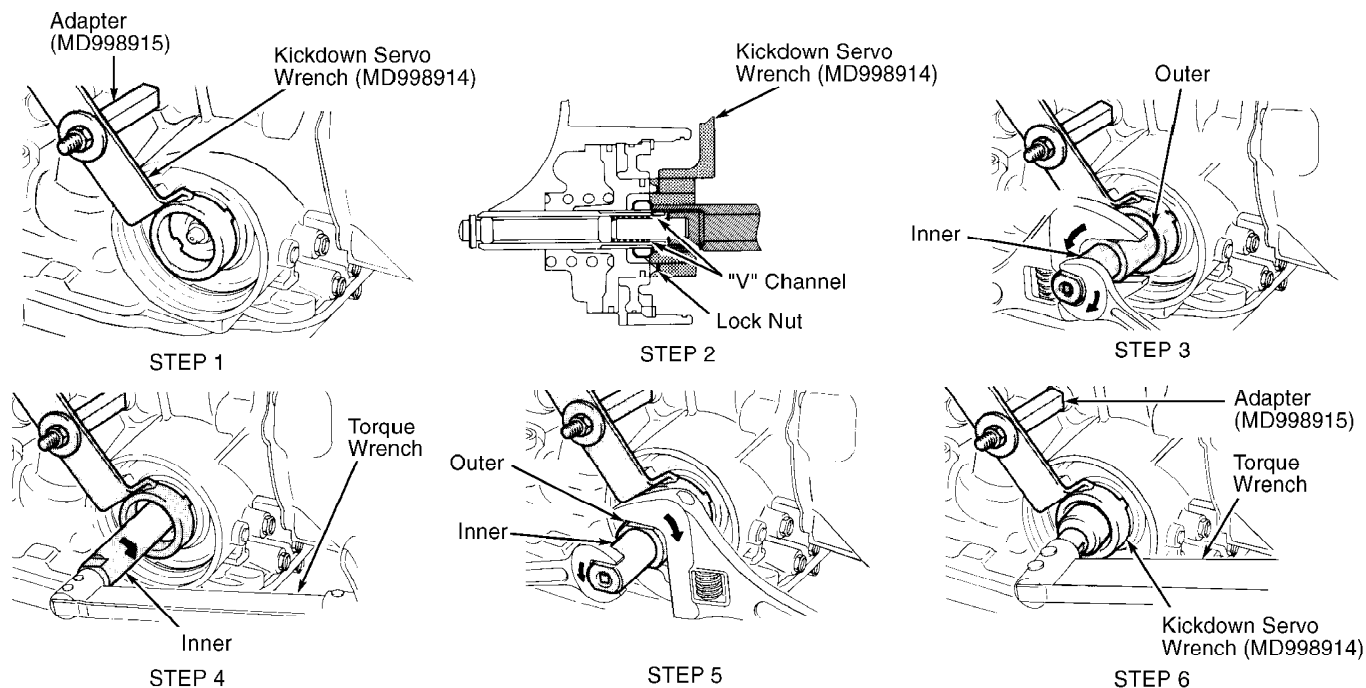


Fig. 2: Adjusting Kickdown Servo  
Courtesy of Mitsubishi Motor Sales of America.

3) Loosen lock nut to "V" channel of adjuster rod. See Fig. 2. Tighten inner section of Kickdown Service Adjustment Assembly (MD998916) until it contacts lock nut.

4) Install outer section of kickdown service adjustment assembly on lock nut. Rotate outer section to left and inner section to right to contact lock nut with inner section.

5) Using an INCH-lb. torque wrench on inner section, tighten inner section to 86 INCH lbs. (9.8 N.m), and then loosen inner section. Tighten inner section to 43 INCH lbs. (4.9 N.m).

CAUTION: Before tightening lock nut with torque wrench, tighten it by hand until it contacts piston. If torque wrench is used initially, lock nut and adjustment rod may rotate together.

6) Back off outer section 2-2 3/4 turns. Rotate outer section

to right and inner section to left until inner section is free of lock nut. Tighten lock nut by hand until it contacts piston. Using torque wrench, tighten lock nut to 18-23 ft. lbs. (25-32 N.m).

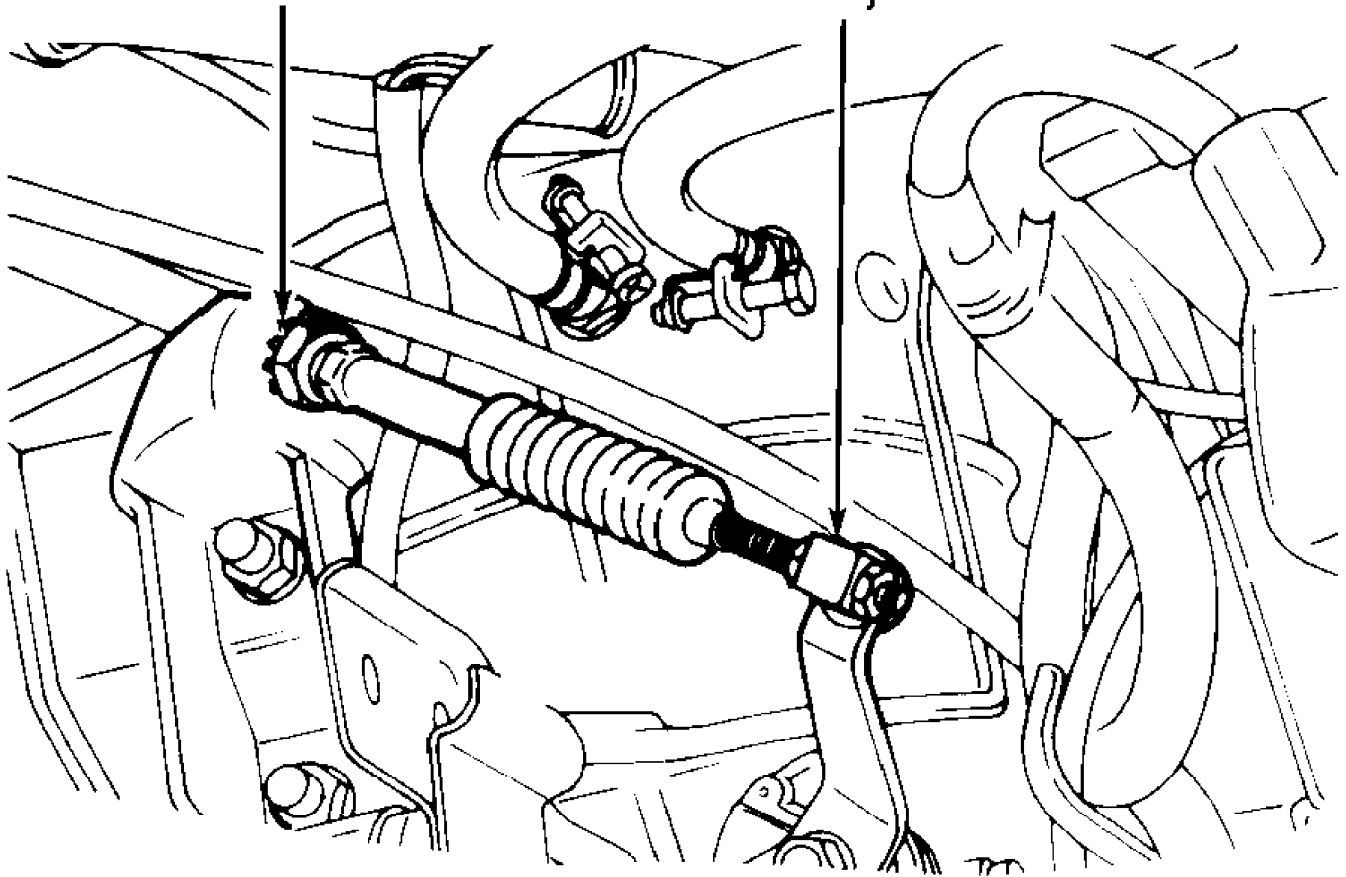
7) Remove adapter and kickdown servo wrench. Install new "O" ring in groove around switch. Install switch and snap ring.

## SHIFT LINKAGE

Adjust shift cable at transaxle/transmission end of cable. Place shift lever in Neutral. Ensure shift lever and neutral safety switch are in Neutral position. If cable was replaced, ensure toothed washer is installed. See Fig. 3. Turn adjuster at cable end so it fits into manual lever on transaxle/transmission, and no slack exists in cable. See Fig. 3.

### Toothed Washer

### Cable Adjuster



90E06136

Fig. 3: Adjusting Shift Cable

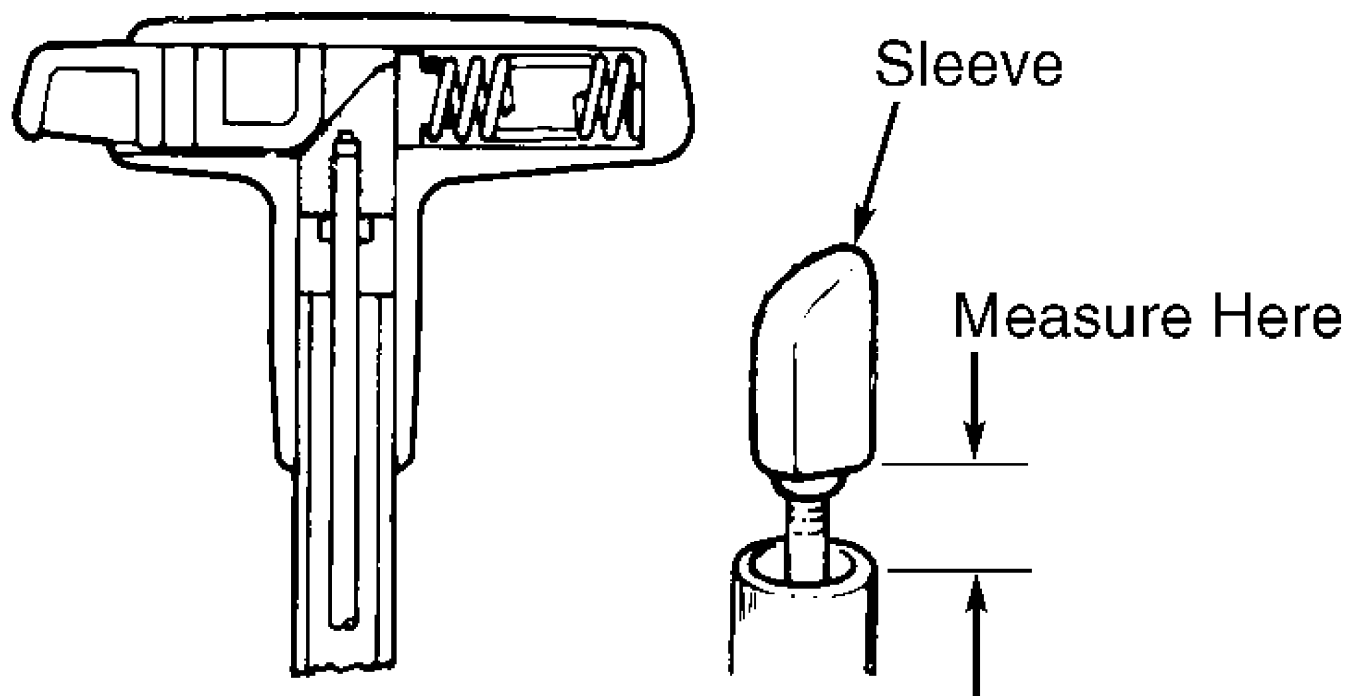
Courtesy of Mitsubishi Motor Sales of America.

## SHIFT LEVER SLEEVE

To adjust shift lever sleeve, remove shift handle on top of shift lever. With lever in Neutral, turn sleeve so distance between sleeve and lever end is within specification. See SHIFT LEVER SLEEVE CLEARANCE SPECIFICATION table. See Fig. 4. Ensure beveled side of sleeve faces toward push button (if equipped).

# SHIFT LEVER SLEEVE CLEARANCE SPECIFICATION TABLE

Application	Clearance In. (mm)
Diamante, Stealth & 3000GT .....	.60-.63 (15.2-16.0)



100010

Fig. 4: Adjusting Shift Lever Sleeve  
Courtesy of Mitsubishi Motor Sales of America.

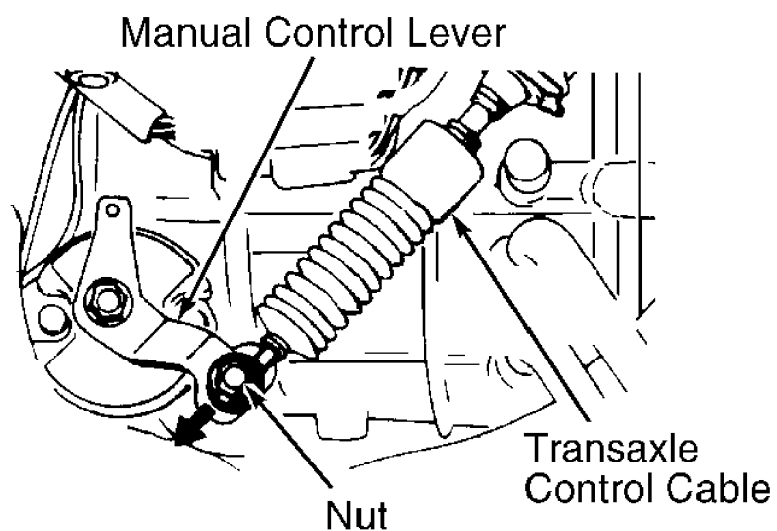
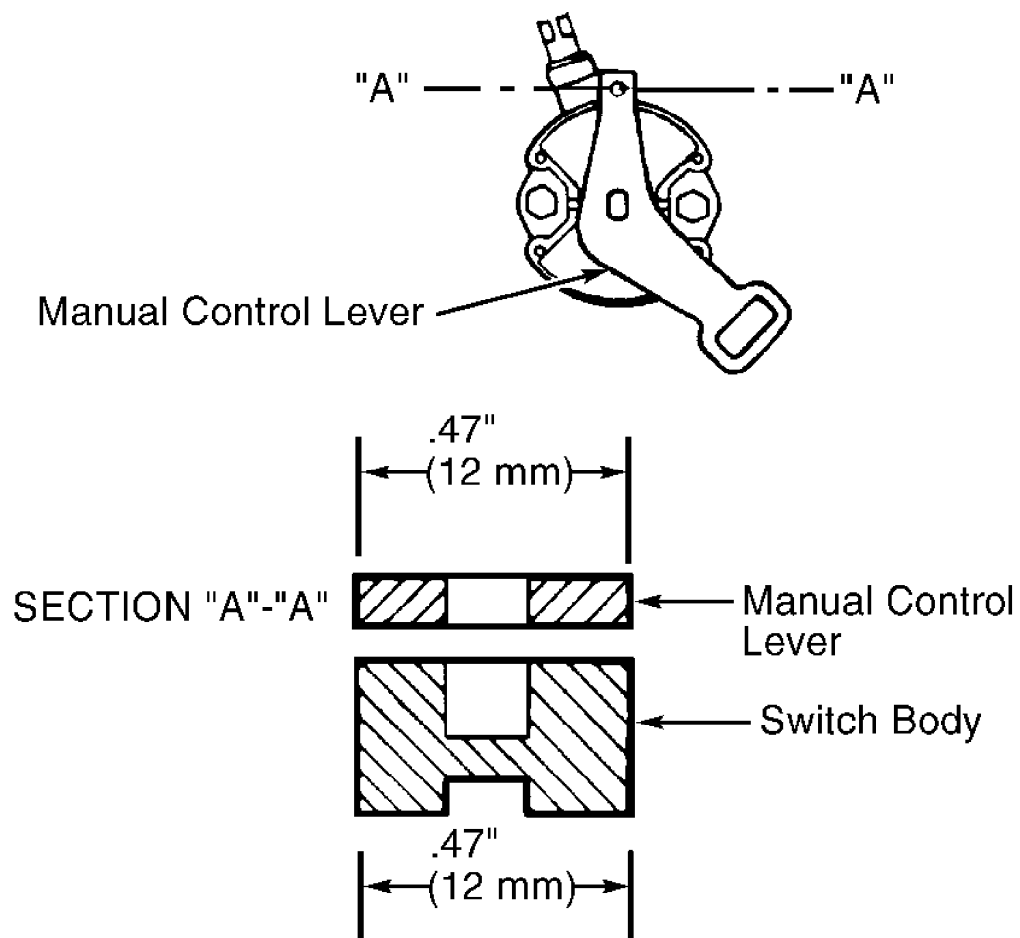
## NEUTRAL SAFETY SWITCH

1) Place shift and manual control levers in Neutral. For adjustment, turn switch body in order to align small end of manual control lever with corresponding flange on switch body. Tighten switch mounting bolts to 84-108 INCH lbs. (10-12 N.m).

CAUTION: DO NOT drop switch body.

2) Loosen nut at end of transaxle control cable, and lightly pull in direction of switch. Tighten nut to 84-120 INCH lbs. (10-14 N.m). See Fig. 5.

3) Ensure selector lever is in Neutral. Ensure lever functions correctly at transaxle, in range corresponding to that indicated by selector lever.



91102927  
 Fig. 5: Adjusting Inhibitor (Neutral Safety) Switch  
 Courtesy of Mitsubishi Motor Sales of America.

## TORQUE SPECIFICATIONS

# TORQUE SPECIFICATIONS TABLE

Application	Ft. Lbs. (N.m)
Drain Plug	
Transaxle/Transmission .....	22-25 (30-35)
Transfer Case .....	22-25 (30-35)
Transmission Control Cable	
Adjusting Nut .....	17 (24)
	INCH Lbs. (N.m)
Oil Filter/Screen Bolt .....	48-60 (5.4-6.8)
Oil Pan Bolt .....	84-108 (9.5-12.2)